

THE CAMPAIGN FOR GIPSON HALL



OVER THE LAST 10 YEARS, THE FACILITIES AT HOOSAC SCHOOL HAVE SEEN MANY UPGRADES AND ADDITIONS. SOME WERE MORE EXCITING THAN OTHERS, BUT ALL WERE NECESSARY FOR THE CONTINUED GROWTH OF THE SCHOOL. INFRASTRUCTURE PROJECTS HAVE MADE POSSIBLE THE EXPANSION OF THE STUDENT BODY TO RECORD NUMBERS. TOWNE HALL, A NEW DORMITORY FOR GIRLS BUILT TWO YEARS AGO, HAS BROUGHT OUR RATIO OF BOYS AND GIRLS ON CAMPUS TO NEARLY 50:50.

THE RICHARD J. PHAIR FITNESS CENTER, THE COACH RYAN COURT, FOUR NEW TENNIS COURTS, AND MOST RECENTLY A NEW SOD SOCCER FIELD HAVE ENABLED THE ATHLETIC PROGRAM TO REACH NEW HEIGHTS, ATTAINING NATIONAL RECOGNITION FOR OUR SOCCER, BASKETBALL, AND TENNIS TEAMS.

THE NEXT AND MOST IMPORTANT STEP IN ENSURING CONTINUOUS IMPROVEMENT IS STRAIGHTFORWARD: A NEW ACADEMIC BUILDING IS NEEDED TO BOLSTER AND SUPPORT AN ALREADY ROBUST ACADEMIC PROGRAM. WITH THE ADDITION OF 100 STUDENTS OVER THE LAST 10 YEARS THERE IS SIMPLY NOT ENOUGH QUALITY CLASSROOM SPACE AVAILABLE

FOR OUR 222 STUDENTS. HOOSAC HAS ALWAYS DONE MORE WITH LESS, BUT WE HAVE REACHED A POINT WHERE WE NEED MORE LEARNING SPACE TO ACCOMMODATE OUR EXPANDED CURRICULUM AND STUDENT BODY.



FLOOR PLAN

SCALE: 1/16" = 1' - 0"



ADDRESSING THESE GROWTH ISSUES HAS OCCUPIED THE BETTER OF THE SUMMER AND THROUGH THE COOPERATION BETWEEN TEACHERS, THE HEADMASTER, ARCHITECTS, AND TRUSTEES WE HAVE COME UP WITH A DESIGN FOR A NEW BUILDING THAT WILL PROVIDE THE NECESSARY FEATURES WHILE AT THE SAME TIME STAYING TRUE TO THE NOTION OF EFFICIENCY THAT HAS BEEN A STAPLE FOR HOOSAC.

ASIDE FROM JUST THE LOGISTICS OF ADDED SPACE, KEY CURRICULUM AREAS WERE IDENTIFIED AS WELL. ALONG WITH NEW CLASSROOMS ALSO COMES THE OPPORTUNITY TO EXPAND THE SCOPE OF THE ACADEMIC PROGRAM. MODERN EDUCATION REQUIRES MODERN FACILITIES.

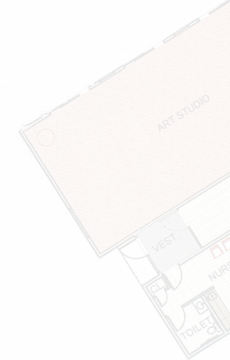
IN ORDER TO PROVIDE THE MOST MODERN COURSE OFFERING HOOSAC NEEDS A DIGITAL VIDEO EDITING LAB AND A CYBERSECURITY CENTER TO BRIDGE THE GAP BETWEEN TRADITIONAL LIBERAL STUDIES AND THE MODERN COURSEWORK THAT IS SHAPING THE CAREERS OF STUDENTS TODAY. THESE SPACES WILL BE INTEGRAL TO IMPLEMENTING HOOSAC'S TECHNOLOGY CURRICULUM.

AN EQUALLY INTEGRAL PART OF A HOOSAC EDUCATION IS THE FINE ARTS PROGRAM. EACH YEAR, UNDER THE GUIDANCE OF OUR DIRECTOR OF ART, SPENCER SUSSMAN '04, STUDENTS ARE PRODUCING WORKS OF ART THAT HAVE GARNERED RECOGNITION IN LOCAL MUSEUMS AND ATTRACTED RECRUITERS FROM THE TOP ART COLLEGES IN THE COUNTRY. IN ORDER TO NURTURE THIS GROWTH AND HELP OUR STUDENTS INCREASE THEIR SKILLS, A NEW ART STUDIO IS NEEDED.

THE NEW CLASSROOMS WILL BE OUTFITTED WITH ALL THE BEST LEARNING TOOLS AND DESIGNED TO MAXIMIZE LEARNING OPPORTUNITIES. THE ART CENTER DESIGN WILL BE LED BY MR. SUSSMAN WITH INPUT FROM EXPERTS IN THE ART WORLD FROM ACROSS THE COUNTRY AND LOCALLY. EVERY DETAIL WILL BE EXAMINED AND EVERY FEATURE WILL HAVE A PURPOSE. CARE HAS BEEN TAKEN TO



Henry Clay Gipson mountain-climbing sometime in the 1930s



Henry Clay Gipson mountain-climbing sometime in the 1930s. CC BY-SA 4.0

ENSURE THAT THE LOCATION AND THE CONSTRUCTION OF THE BUILDING BLEND WITH THE REST OF OUR HISTORIC CAMPUS. THE WIDE OPEN SPACES THAT WE CURRENTLY ENJOY WILL NOT BE INFRINGED UPON AND ROOM FOR FUTURE GROWTH IS ALLOWED IN THE DESIGN.

THE MOST IMPORTANT ASPECT OF THIS PROJECT, THE ONE DETAIL THAT WHOLLY ALLOWS ITS COMPLETION, IS THAT OF FUNDING. THE ESTIMATE FOR THE COST OF THE CURRENT DESIGN IS APPROXIMATELY 2 MILLION DOLLARS. FORTUNATELY, WE HAVE ALREADY RAISED MORE THAN HALF OF THE FUNDS NEEDED. A SIGNIFICANT GIFT IN HONOR OF THE GIPSON BROTHERS HENRY CLAY '27, ALLEN H. '28, AND DONALD LIVINGSTON '32 WHO ATTENDED HOOSAC IN THE LATE 1920S, HAS MADE IT POSSIBLE FOR US TO BRING THIS PROJECT FORWARD. AS SUCH, GIPSON HALL WILL BE MOVING INTO THE CONSTRUCTION PHASE ONCE WE HAVE THE REST OF THE FUNDING IN PLACE. OUR GOAL IS TO BEGIN CONSTRUCTION AS SOON AS POSSIBLE.

NOW IS YOUR OPPORTUNITY TO HELP PROVIDE THE STUDENTS OF HOOSAC WITH THE BEST EDUCATIONAL FACILITIES. GIPSON HALL WILL BE A LIVING MEMORIAL TO THE GIPSON BROTHERS AND AN ACADEMIC HUB THAT WILL FURTHER ENHANCE THE SCHOOL'S PROGRAM.

NAMING OPPORTUNITIES FOR CLASSROOMS AND THE NEW ART CENTER ARE STILL AVAILABLE, MAKE YOUR GIFT AND HELP HONOR OR MEMORIALIZE A CLASSMATE, FORMER OR CURRENT FACULTY MEMBER, CLASS YEAR OR TEAM. JOIN TOGETHER AND HELP US COMPLETE THE CAMPAIGN FOR GIPSON HALL AS SOON AS POSSIBLE AND BY DOING SO, YOU WILL BE HELPING THE STUDENTS OF TOMORROW, TODAY!



Allen H. '28 standing (left), Donald Livingston '32 standing (right), and Henry Clay Gipson '27 seated



SCAN ME

FLOOR PLAN
SCALE: 1/16" = 1'-0"



Hoosac

SCHOOL



Hoosac School
Gipson Hall